



UNLEASH YOUR IMAGINATION

GUV1804e 1.8M LED-UV PRINTER

Economy format, First class performances



Cost effective



High saturation



Excellent weather resistance



Fast drying



Eco friendly



3.8 pl

Reach bigger range of customers

- Multi applications: vinyl, wallpaper, clear PET, canvas, black film, banner...

- LDP printing modes: Embossing, sandwich, high Density, Day & Night...

Produce the best quality

- Saturated colors, deep Black and immaculate White.

- Matte/Glossy effect.

- 3.8pl drop size making possible to print sharp as small as 3-point text.

Lower your production cost

- Very affordable ink.

- No warm-up & drying time required. The ink is instantly dried by the UV LED lamps.

- No lamination or any other extra procedure required.

- Low power consumption.

Improve your sustainability

- No mercury, no ozone emission, no ultra violet radiation.

- No VOCs

- Low energy consumption: No ventilation, air conditioning system, nor heater required.

Advantages of LED-UV curing technology

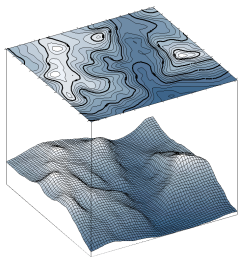
Ready to use. No preheating required.

- With no mercury, no ozone emission, no ultraviolet radiation, LED curing technology has the advantages of reducing energy consumption and making possible to print on heat sensitive materials.
- Durable and stable, LED UV light technology offers smooth and perfectly controlled curing at high speeds and minimizes wastes (energy, materials, ink, time...).
- Water-cooled heat dissipation system to cool down the lamps during operation, ensuring longer life span of the equipment, preventing lamp overheat.

LDP creativity

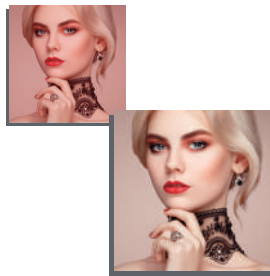
LDP high quality ink associated to LDP creative printing modes allow our customers to propose various applications. From printing on banner for billboard ads with LDP long outdoor durability ink to printing high quality posters on photo paper. Printing high standard light box using backlit film/fabric, double-sided printouts on clear materials, or even embossing effects with out multi-layer print mode.

Matte or Glossy? Choose between glossy and matte for your printouts.



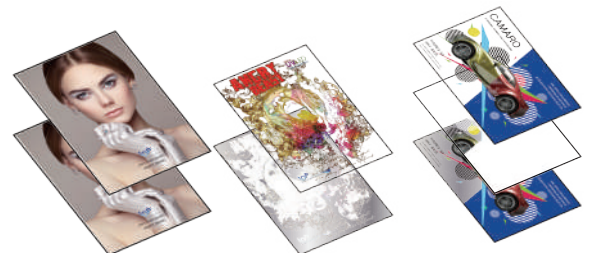
Multiple ink layers creating three-dimensional effect

Visual and tactile sensations.



White ink offers the possibility to print on colored materials without to get altered colors

Reproduce the colors of the original image.



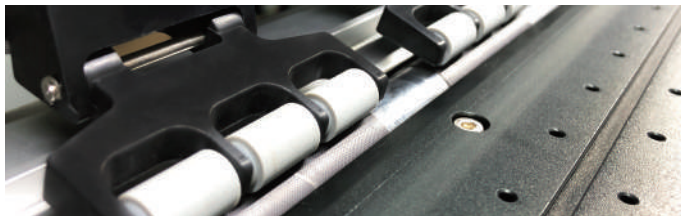
C / C+C

W+C / C+W

CWC

Various creative printing modes Separate or combine white and colors.

Various printing styles & finishes: combine them as you like.



4 channel printheads

- 4 colors per printhead, helps saving cost, since less heads are required.
- The printhead calibration is easier & faster, making the whole process of maintenance much more pleasant and efficient.

Smooth stepping and media feeding

- Stable stepping motor and linear guide rails to ensure smooth movement and fine quality.
- 2-size media holders: 3 and 2-inch paper roll holders.



Intuitive operation and maintenance

- Intuitive operation software interface making easy to operate the printer and to check its status.
- LDP provides a variety of printing modes and settings for different type of materials.
- Presets for simplified operations.



SPECIFICATION			
Print head	Epson		
Ink	LED-UV INK		
Media type	PP, PVC, PET, Backlit, Fabric...etc		
Speed	4 Pass	Color 25sqm/Hr	White 8sqm/Hr
	6 Pass	Color 17sqm/Hr	White 5.5sqm/Hr
Colors	Cyan / Magenta / Yellow / Black / White		
Weight	Net Wright	350 KG (771.6 lbs)	
	Gros Weight	430 KG (948 lbs)	
Machine Dimensions	L 2965 / W 750 / H 1415 mm		
Machine Warp Dimensions	L 3475 / W 1000 / H 620 mm		
Printing area size	1850 mm		
Media thickness	1.5-2.5 mm		
Curing system	LED-UV lamp		
Power requirement	Single phase 220V ± 10% (50Hz)		
RIP software (Option)	ONYX / CALDERA		
Environment	Working Temperature	20°C ~ 30°C (Recommended)	
	Humidity	35%~65% (Recommended)	
Connection interface	USB 3.0 High speed connection		

E7 INK		
Cyan	ILU-LTE7-C	LDP LED-UV INK - CYAN
Magenta	ILU-LTE7-M	LDP LED-UV INK - MAGENTA
Yellow	ILU-LTE7-Y	LDP LED-UV INK - YELLOW
Black	ILU-LTE7-K	LDP LED-UV INK - BLACK
White	ILU-LTE7-W	LDP LED-UV INK - WHITE



UNLEASH YOUR IMAGINATION



www.lintor.com

Lintor Technologies Co.,Ltd.

4F., No.577, Tanmei St., Neihu Dist., Taipei City 11484, TAIWAN

TEL : +886-227931912 FAX : +886-227931012 E-mail : sales@lintor.com